



Twitter

What is Twitter?

Twitter is a social media platform that lets you tweet, retweet, follow people or pages, and search for people and tweets. It lets you use hashtags to categorize and filter, reply to someone's tweet, and more.

Important note

To comply with [Twitter's Anti-spamming and Automation rules](#), Zoho Flow will restrict some of the functionalities of the triggers and actions available for Twitter. Auto-responding to search mentions, as well as including *@mentions* in content tweeted using the *Create tweet* action is a violation of the policy. Therefore, **@mentions will be automatically removed from the tweet content**. Also, to further comply with the policy, Zoho Flow will only provide the functionality of *Create tweet* action to profiles that satisfy the following criteria:

- The age of the account should be more than 21 days
- The number of followers should be more than 25
- A minimum of 10 tweets already made
- Default profile picture is not used

How to connect your Twitter account to Zoho Flow

1. Select the required trigger and click **Next**.
2. If there are no other **Twitter** connections in your account, click **Connect**. Otherwise, click **New connection**.

Follower added
Triggers when you get a new follower
ⓘ Checks for new entries every five minutes

Connection *

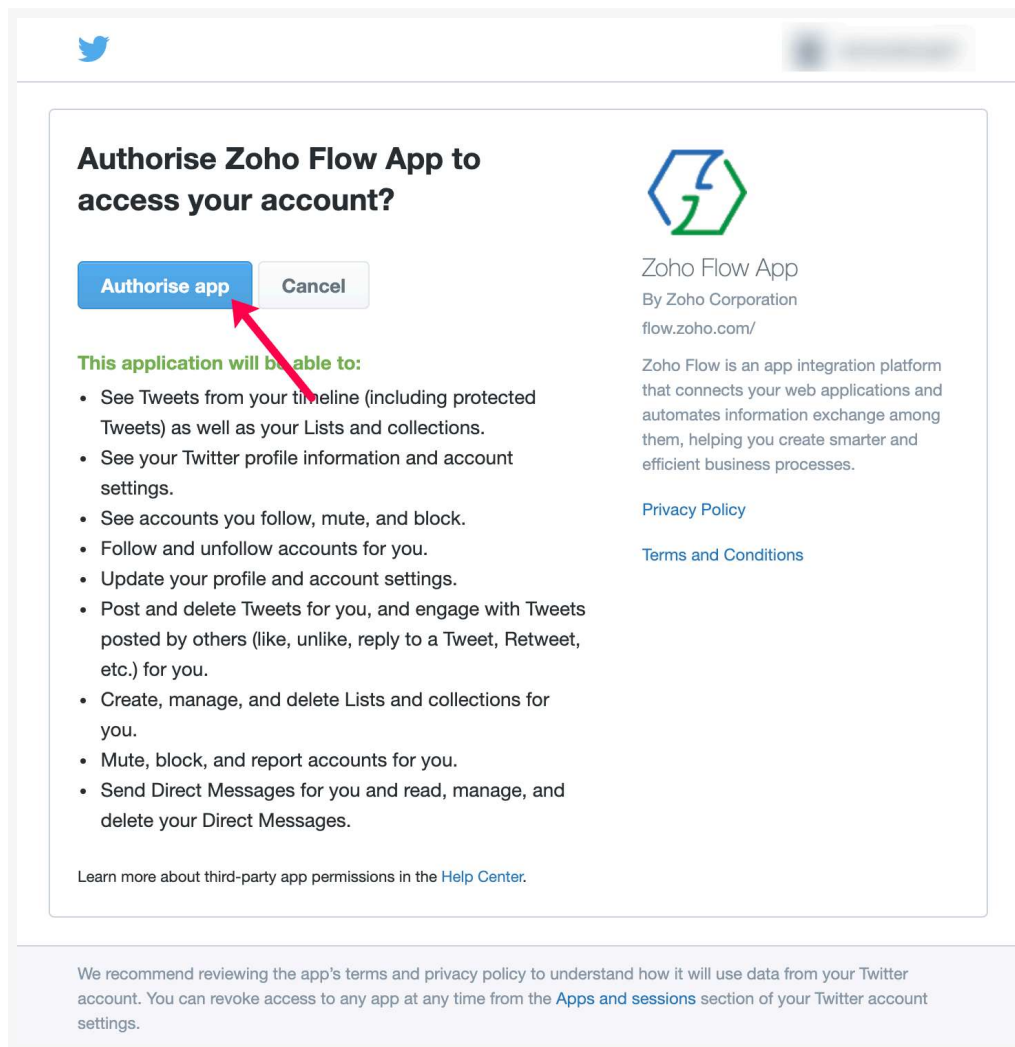
Choose Connection ▼ **+ NEW**

Variable Name *

trigger

3. Alternatively, you can create a new connection by navigating to **Settings**, then clicking **Connections**. Click **Create connection** and choose **Twitter**.
4. Enter a **Connection Name** and click **Authorize**.
5. Enter your Twitter account credentials in the pop-up.

6. Click **Authorize app** to authorize Zoho Flow to access your account.



API documentation

If you experience any Twitter-related errors in your flows or if you wish to learn more about the Twitter API, the API documentation can be found [here](#).

[Learn how to fix app-specific errors using API documentation](#)

Triggers and Actions available in Zoho Flow

Triggers

[Follower added](#)

Triggers when you get a new follower

[Follower added for specified user](#)

Triggers when the selected user gets a new follower

Search term mentioned

Triggers when there is a mention of the search term

Tweet liked

Triggers when the selected user likes a tweet

Tweet made by user

Triggers when a selected user tweets

Tweet posted

Triggers when you post a new tweet

Actions

Create tweet

Creates a new tweet

Fetch user

Fetches the details of the specified user

https://help.zoho.com/portal/en/kb/flow/user-guide/app-specific-documentation/articles/twitter-help#What_is_Twitter